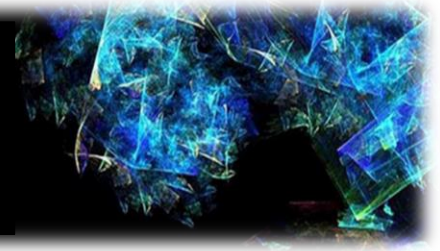




**DHET/NSA Capacity Building
and Advocacy Project
funded by the NSF**



The Economic Reconstruction and Recovery Plan (ERRP) and the District Development Model (DDM)

Facilitator: Dr Shirley Lloyd

29 November 2022, The Beach Hotel, Gqeberha/Port Elizabeth

APPETD is pleased to invite the private providers constituent to attend the fully funded, full day workshop to be held Nationally focusing on the Economic Reconstruction and Recovery Plan (ERRP) and the District Development Model (DDM) on Private Providers. The project will also deliver a report based on the empirical evidence, data and learning derived from implementation of Phase 11 of the NSF-funded project. This means that there will be ongoing interaction with stakeholders over the period to ensure that up to date information and evidence of projects and programmes to enable the implementation of the ERRP and DDM policies happen in partnership with private providers, as one of the sectors involved directly in these policy interventions.

Dr Shirley Lloyd recently retired as Director: NQF Directorate at the Department of Higher Education and Training (DHET). In this position she was responsible for the overarching support and advice to the Minister about NQF matters, and all other matters related to policy development, monitoring and evaluation and implementation of NQF. She has served and still serves on numerous committees, some include chair of the *Committee of Experts on Developing and Implementing Agreements on Mutual recognition of Qualifications with other Countries* (MRQ Committee of Experts), the inter-departmental NQF Steering Committee, the Directors-General forum, the Chief Executive Officers' committee, and a member of numerous sub-committees related to the NQF system. She has taken on the role recently of APPETD Board member and currently serves as the APPETD Deputy Chairperson.

Programme

07:00 - 08:30	Registration and networking
08:30 - 08:45	Opening and welcome by APPETD CEO: Ms Cynthia Reynders
08:45 - 09:30	Section 1 - Capacity building definition and intervention types
09:30 - 10:30	Section 2 - Recap of capacity building programme for the NSDP 2030
10:30 - 10:45	Refreshments
10:45 - 13:00	Section 3 - Economic Reconstruction and Recovery Plan
13:00 - 13:45	Lunch break
13:45 - 15:00	Section 4 - District Development Model
15:00 - 15:15	Refreshments
15:15 - 16:30	Summary, the way forward
16:30 - 16:45	Closure
